



# Health



# Housing

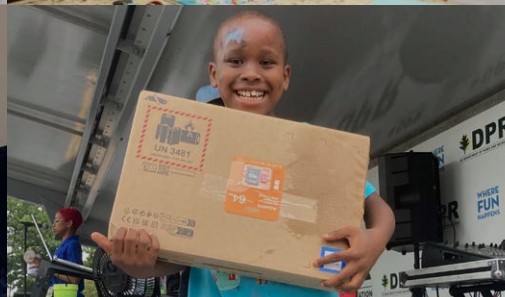


Annual Impact Report 2024-2025

# Hope



Caring for Families.  
Improving Lives.  
Leading Change.







## Table of Contents

**Health**

pg 4

**Housing**

pg 8

**Community**

pg 12

**Giving**

pg 16

## Our Mission

Community of Hope's mission is to **improve health, end homelessness, and partner with communities** to make Washington, DC more equitable.

## Our Vision

Everyone in Washington, DC is **healthy, housed** and hopeful.

## Dear Friends,

I am excited to share this Annual Impact Report with you. Woven throughout this report, you will find stories, pictures of the people we serve, and lots of outcomes. This report not only shares our 2024 impacts but some of our impacts since we launched our last strategic plan five years ago.

For all of 2024, we reflected on this word—**Imagine**. We listened to clients, patients, board, and staff and we imagined ways to sustain and potentially expand our impact through 2029. Check out the new strategic plan graphic capturing our mission, vision, goals, and values on this page.

In 2025, we have gotten right to work on items in our strategic plan, while also navigating a changing environment. We are agile at managing change and remain hopeful that we can overcome any challenges.

Even as we were imagining the new future, as you'll see in this report, we are actively and effectively serving our community. I am pleased to share that **over 20,000 people received health, housing, and community resources last year.**

Thank you for your role in supporting Community of Hope's mission.



With hope,

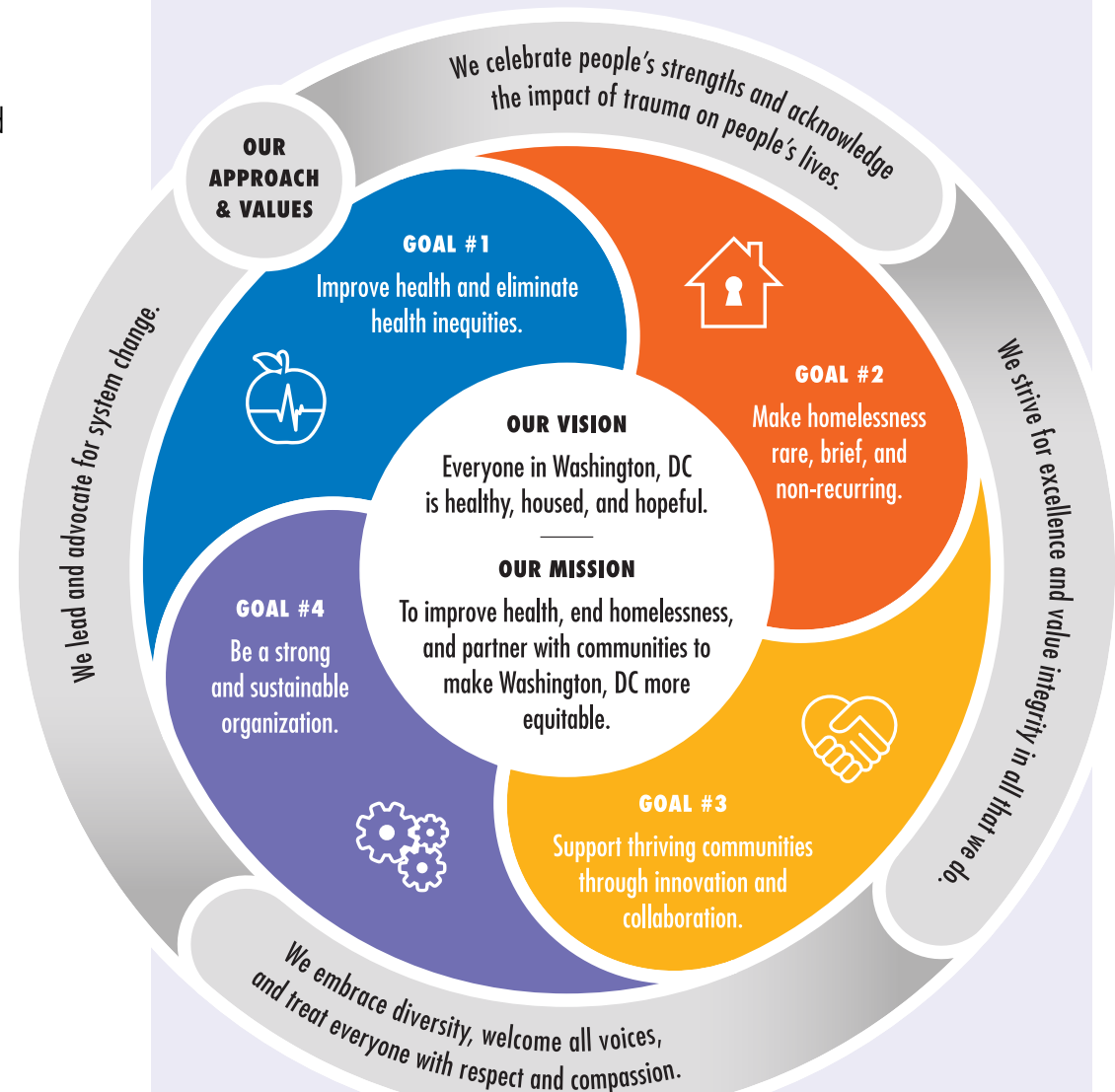
Kelly Sweeney McShane  
President and CEO

### Board Members

Kessia Cruz, Board Chair  
Melissa McGuire, Vice Chair  
Jenna Kirkpatrick Howard,  
Treasurer  
Portia Quarles Ross,  
Secretary

Cathy Austin  
Monique Diop  
Lise Hall  
Warren Ingram  
Adyba Khorami  
Lisa Madden

Ann McAllister  
Erin Henderson Moore  
Vincent Ratliff  
Dr. Khandra Y Tyler-Beynum  
Ernesto Del Valle  
*List as of April 2025*



# Imagine: A Journey of Change, Led by Hope

At 65, Cheryl is in a season of healing and reflection. “I’m blessed by the best,” says Cheryl Ball with a warm laugh. But her journey—like many who come to Community of Hope—has been one of perseverance and finding the right people at the right time.

Cheryl and her husband Dennis first came to Community of Hope in 2018, during their personal time of rebuilding. Cheryl had just lost her job, and she found herself without insurance or a primary care provider. For the first time in her life, Cheryl applied for Medicaid—and she was nervous about what care would look like with her new benefit.

When Cheryl arrived at Community of Hope, those worries quickly faded. She began receiving ongoing primary care and emotional wellness support, while her husband became a regular with our dental team. Cheryl and her husband have seen Dr. Gerstenmaier—“Dr. G,” as Cheryl affectionately calls him—ever since.

“He’s been there for both of us—always checking in, giving us referrals when we need them, and making sure we’re taken care of.”

For Cheryl, Medicaid has been a lifeline. As a retired woman on a fixed income, access to comprehensive healthcare wouldn’t be possible without it.

“If I didn’t have Medicaid, I don’t know what I would do,” she says. “Community of Hope and Medicaid together? That’s how I’m still here and healing.”

Earlier this year, Cheryl faced one of her toughest challenges—a fall that fractured her ankle and required surgery. Recovery was difficult. That’s when Community of Hope’s new Transitions of Care Nurse, Rosanna Broadbent, stepped in.

“She’s been a blessing to me,” Cheryl says. “She helped me get a wheelchair, made sure I had what I needed, even cleaned my foot when I couldn’t reach it after surgery.”

Rosanna is part of our expanded chronic disease program, made possible by the United Health Foundation. She helps patients adjust post-hospitalization with support for medications and recovery.

“[I’ve] got her on speed dial,” Cheryl laughs.



While physical healing has taken center stage, Cheryl has also leaned on Community of Hope for emotional wellness care.

Today, thanks to Medicaid and the care at Community of Hope, Cheryl is healing, supported, and surrounded by a community that sees her, believes in her, and stands by her.

“  
Community of Hope  
and Medicaid together?  
That’s how I’m still  
here and healing.  
”







# Imagine: Being Wrapped in Health

In 2024, Community of Hope provided holistic healthcare to **15,716 patients** across three main health centers, telehealth, home-based care, and partner sites. Our Federally Qualified Health Center model of care ensures accessible, integrated support for patients of all ages and backgrounds. From pediatric checkups to free dental care for senior citizens, every touchpoint is designed to meet people where they are—with compassion and respect.

## Our Core Medical Services

### Primary Medical Care

Our providers build long-term relationships with patients and deliver preventative care for all ages, from children to senior citizens. We offer maternal health care, chronic disease care, sexual health, and refugee health services.

### Emotional Wellness

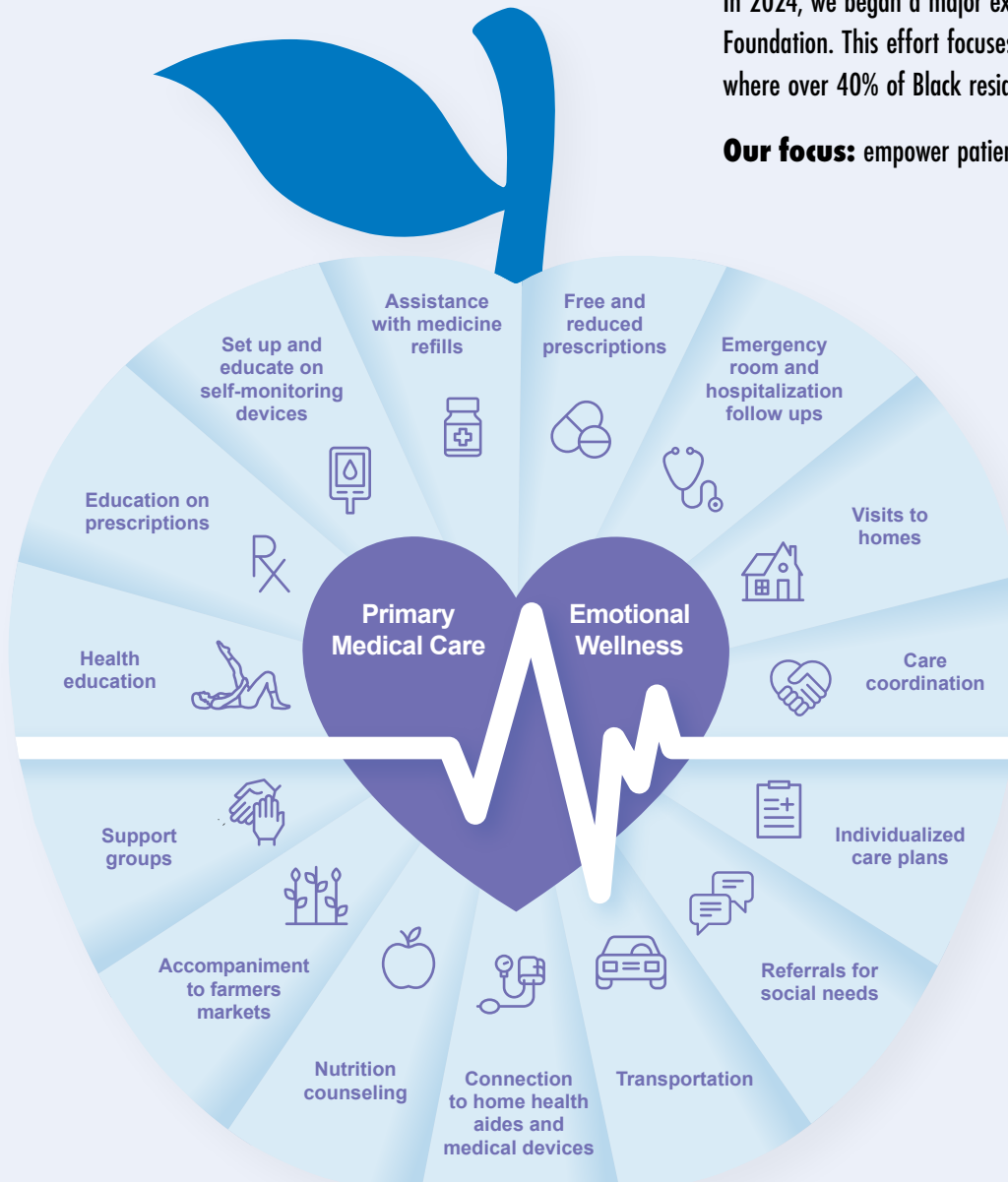
Emotional wellness is integrated into our core services, with offerings such as individual and family therapy, school-based mental health, and substance use counseling.

### Dental Care

We provide comprehensive dental services for all, integrated with primary care for children, and free dental care for seniors to ensure oral health is not left behind.

Our chronic disease management approach improves outcomes for people with hypertension and diabetes. In 2024, we began a major expansion of our program through a \$3 million partnership with the United Health Foundation. This effort focuses on long-standing health disparities in communities like Wards 7 and 8—where over 40% of Black residents experience hypertension.

**Our focus:** empower patients, strengthen care coordination, and prevent re-hospitalizations.



### Care Coordination

Community health workers, nurses, and care managers address social needs that impact health.

### Medication + Health Management

Free/reduced prescriptions, refill help, device setup and training, and pharmacy education.

### Support at Home and Beyond

Home visits, follow-up after hospital visits, referrals to home health aides, and local farmers market partnerships.

### Emotional + Social Wellness

Counseling and support groups integrated with referrals for housing, food, and transportation.

### Education + Empowerment

Nutrition counseling, health education, and care plans tailored to each patient's goals.

## Health Outcomes

### Providing Access

**84,037**  
**VISITS FOR**  
**15,716**  
**PATIENTS**  
(13,835 in 2019)

**44%**  
**INCREASE IN**  
**PHARMACY**  
**PRESCRIPTION**  
**FULFILLMENTS**  
(since 2023)

**95%**  
of patients who would  
recommend Community  
of Hope



### Integrating Care Throughout Our Programs

**49%**  
of our Family Success  
Center clients also receive  
healthcare with us

**13%**  
of our medical patients  
also received emotional  
wellness services

**12%**  
of our medical  
patients also received  
dental services

**10%**  
of our housing  
clients also receive  
healthcare

Our clients and patients are invited to take full advantage of all our health services and we always respect their choice. We love serving as many people comprehensively as we can.

### Improving Health Outcomes

**76%**  
of hypertensive patients with  
controlled blood pressure  
(67% in 2019)

**77%**  
of diabetic patients  
with controlled A1C  
(76% in 2019)

**64%**  
of women screened  
for breast cancer  
(69% in 2019)

**76%**  
of women screened  
for cervical cancer  
(66% in 2019)

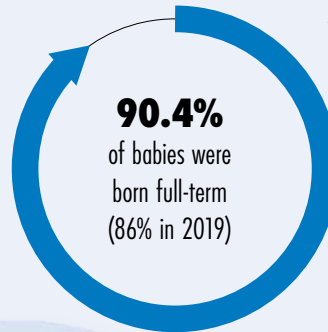
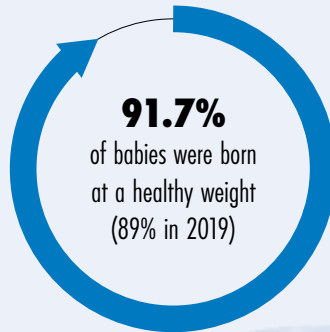
**58%**  
of adults screened  
for colorectal cancer  
(61% in 2019)

We've seen a lot of changes since 2019, some health outcomes got worse during the pandemic when normal patient care was disrupted. We are seeing many get back to their pre-COVID levels. Every percentage improvement is a moment to celebrate.



## Supporting Healthy Beginnings

**698**  
**PERINATAL**  
**PATIENTS**  
(708 in 2019)

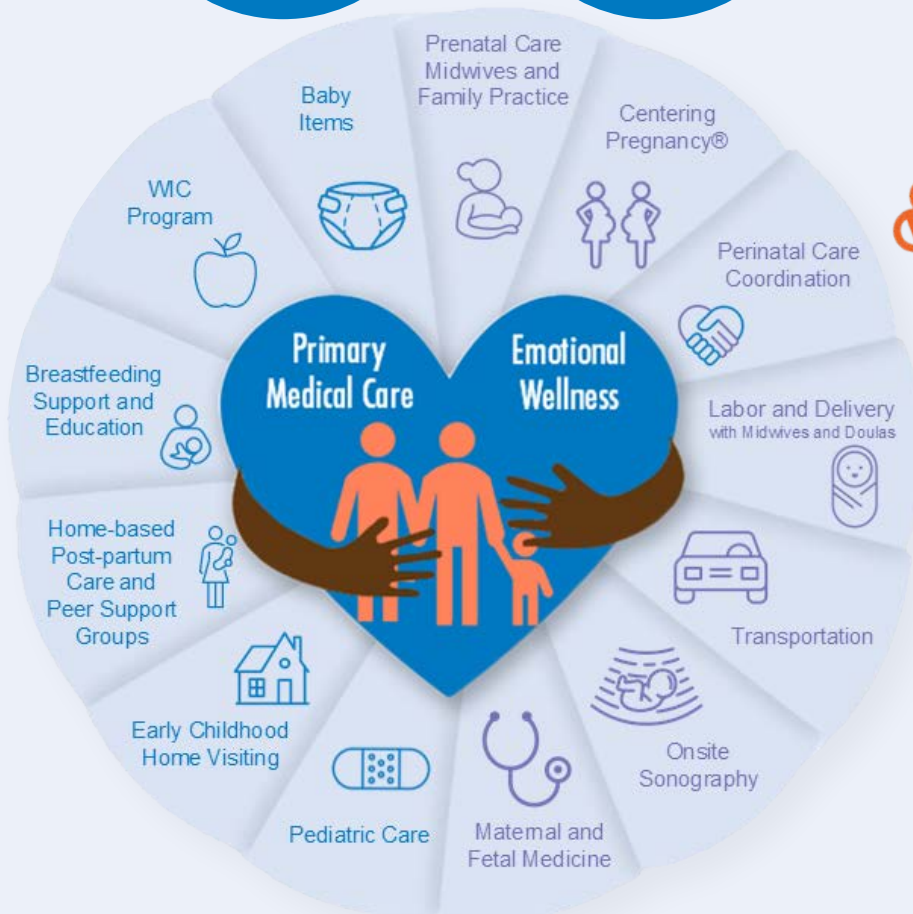


At Community of Hope, maternal and child health is rooted in respect, trust, and a whole-family approach. In 2024, 698 patients received care from pregnancy through postpartum, and 246 babies were delivered by our midwives.

An analysis by *OptumInsights* revealed that our 2023 to June 2024 outcomes continue to surpass city and Medicaid averages. Dig into the comparisons to other families on Medicaid and learn about the impact of trusting care here.



These results are the product of integrated services, culturally affirming care, and intentional partnerships that meet families where they are and build from their strengths.



“  
At COH, I really felt like a person,  
like I had agency and could speak up  
for myself, and like I had advocates...  
Just having that familiarity with each  
[midwife] throughout the course of  
my prenatal care made me feel very  
safe, like my best interest was at  
the forefront.”

— Denise, patient

**Health**

## Housing Our Newborns, Empowering You (HONEY)

# Imagine: Healthy Babies Amid Homelessness

Good health and housing stability are deeply intertwined—and for pregnant people experiencing homelessness, both are critical. In late 2023, Community of Hope launched HONEY to support any pregnant person in DC's homelessness services system providing innovative care.

The HONEY program provides connection to prenatal and postpartum care for moms experiencing homelessness.

In 2024

**122**  
**ENROLLED**  
in full wraparound services  
**+ 40 MORE**  
receiving resource navigation

**100%**  
of those not receiving  
prenatal care were  
connected to health  
services

Love data? An evaluation report is coming out early this fall. Scan here if you'd like to receive a copy when it is completed!



“

I finally felt like I had  
somebody on my side,  
actually advocating for me.

”

— Heather Bernier, HONEY mom



# Imagine: A Stable Home



## Homelessness Prevention

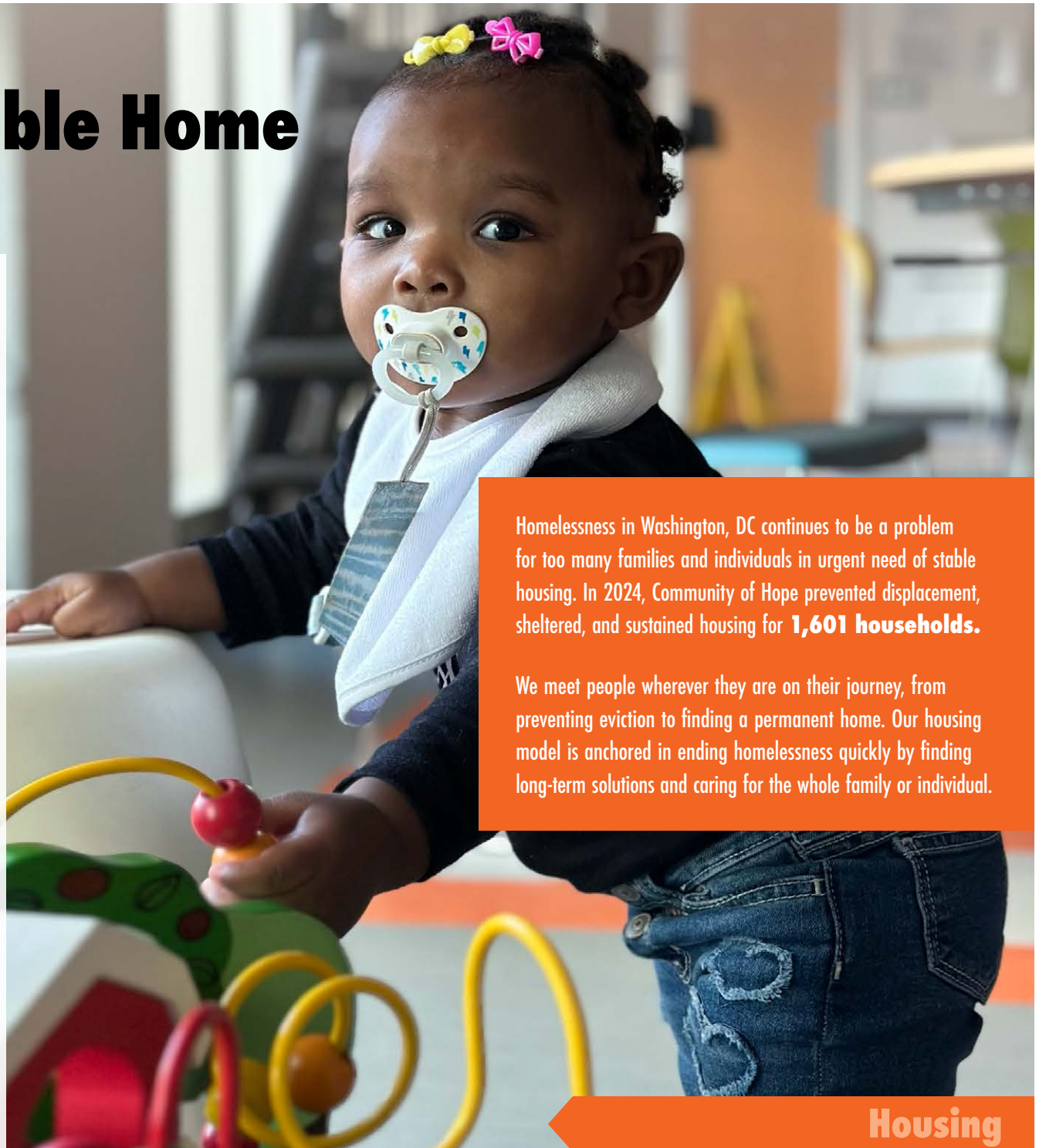
Our Homelessness Prevention Program stabilizes families at risk of homelessness by providing mediation, goal planning, budgeting support, legal support access, and rental assistance to help them achieve stability.

## Temporary Housing

At two shelters for families—and one operated in 2024 for individuals—our clients have a safe place to stay while working toward finding a new home.

## Long-term Support

Our Rapid Re-housing program assists families who have recently exited shelter to maintain stable housing and increase their income. Our Permanent Supportive Housing offers those who have faced chronic homelessness intensive case management and rental supports to stay stably housed in either site-based developments or across the city in their own apartments.



Homelessness in Washington, DC continues to be a problem for too many families and individuals in urgent need of stable housing. In 2024, Community of Hope prevented displacement, sheltered, and sustained housing for **1,601 households**.

We meet people wherever they are on their journey, from preventing eviction to finding a permanent home. Our housing model is anchored in ending homelessness quickly by finding long-term solutions and caring for the whole family or individual.

**Housing**

# Housing Outcomes

## Scale of Support

**1,601**  
**HOUSEHOLDS**  
**SERVED**

**1,386**  
**FAMILIES**

**220**  
**INDIVIDUALS**

## Overall Outcomes

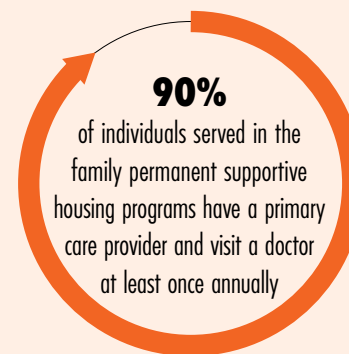


## More than Just Housing

### Children's academic success



### Health for all



## Housing in the Last 5 Years

**17%**  
**INCREASE**  
in people served since 2019

12 individuals  
without children were  
supported in 2020 and it's now  
**18x MORE**

Average length of stay in  
family shelter dropped by  
**28 DAYS**

**3 % POINT**  
**INCREASE**  
for people accessing mental  
health when needed

**IMPROVED**  
measures related to academics,  
teen pregnancy, and criminal justice  
involvement for children and teens

**EXPANDED**  
shelter offerings for families  
and individuals







Credit: Studio Twenty Seven Architecture

### **The Aya**

Homelessness in DC is expected to rise for families in the upcoming year and Community of Hope is responding by expanding our housing programs to meet the need.

In December, we took over operations at The Aya, a second short-term family housing site in Ward 6. This colorful and modern facility offers private rooms, play areas on each floor, stunning views, and on-site support while families work toward securing permanent housing.

### **The Paxton and Ridgecrest**

We also launched services at the brand-new Paxton Apartments, a Foulger-Pratt property in Ward 7, and through expansions at Ridgecrest in Ward 8. These mixed income housing developments allow us to provide permanent supportive housing and case management to 23 families and 2 individuals—including several hard-to-find, three-bedroom units for families.

These new sites represent our deepening commitment to ending homelessness—and ensuring every person has the space and support to build what's next.



Credit: Hoachlander Davis Photography

**Housing**



# Imagine: Resources Within Reach

At the Bellevue Family Success Center (FSC), Community of Hope welcomes neighbors and connects them to the services and support they need—without barriers. Anyone from across the city who calls the 211 Warm Line might be connected to our compassionate team.

The center also addresses community violence prevention through quarterly events in the Bellevue neighborhood.

In 2024, the FSC connected more than **539 families** to services that included food assistance, housing navigation, and employment resources.





Guided by a dedicated Community Advisory Council made up of local residents, the Family Success Center ensures its programming remains rooted in the lived experiences, priorities, and strengths of the Bellevue community.

### In 2024, our programming included

- **Let's Get It:** Housing and employment navigation series
- **Circle of Parents:** Peer-led parenting support
- **Fitness Fridays:** Wellness and connection for youth and families
- **Community Violence Prevention** focused programming

### Signature Events

- **Back to School Bash:** With thanks to Amazon and 10 other partners, our August Back to School event welcomed 1,500 guests and gave away over 2,500 backpacks with school supplies for students of all ages in the community and our housing programs. Many thanks to our partner Bellevue Neighborhood DC Public Library.
- **Winter Celebration:** Families gathered for food, games, arts and crafts, Santa photos, and family fun. Donors showered kids with holiday gifts to bring extra joy.



**Bellevue Family Success Center**







# Night of Hope: Imagine

“

The most significant thing that Community of Hope has done for me is giving me the support to break the cycle of instability.

”

— Tytiana Johnson, Mom served by our health, housing, and Family Success Center



Host committee co-chairs, David and Erica Farhat, and Jenna and Adam Howard, pose with Kelly Sweeney McShane.

At Night of Hope: IMAGINE, 350 guests came together with one purpose—to join our bold imagination for the future.

Hosted by Delia Gonçalves, former TV anchor and community leader, the evening spotlighted the inspiring story of special guest Tytiana Johnson, who shared her journey with Community of Hope from childhood through motherhood.

Guests exceeded a \$125,000 challenge grant, helping raise a total of over \$520,000 in gifts, tickets, and sponsorships to expand access to housing, healthcare, and community resources services across the District.

Every donation, every hand raised, and every shared moment brought us closer to imagining—and creating—a city where everyone is healthy, housed, and hopeful.



Colleen Connors, Ramon De Castro, and Howard Opinsky enjoy a selfie at Night of Hope.

## Celebrating Record-Breaking Generosity

## Thank You, Hope Givers

# Imagine: What Generosity Makes Possible

A. James & Alice B. Clark Foundation  
 Jesse Abraham, PhD and Amy Peck Abraham  
 Alexander & Margaret Stewart Trust  
 Amazon Housing Equity Fund ★  
 Bainum Family Foundation  
 Bernstein Management Corporation  
 Bezos Day One Families Fund  
 Richard and Eleanor Bochner  
 The Brendan & Helen Bechtel Foundation  
 Abigail Burke  
 Charina Endowment Fund  
 Child and Family Services Administration

Claudia Barnett Charitable Fund  
 Kim Clendenin  
 Community Foundation of Sarasota County, Inc.  
 Community Partnership for the Prevention of Homelessness  
 DAF Giving 360  
 DC Department of Behavioral Health  
 DC Department of Human Services  
 DC Health  
 DC Health Benefit Exchange  
 Delta Dental Community Care Foundation  
 Diane & Norman Bernstein Foundation

Direct Relief  
 Amy Dunbar and Theodore Hester  
 Every Mother Counts  
 The Ferris Family Foundation  
 Fidelity Charitable Donor-Advised Fund  
 Foundation Source  
 Adena and Michael Friedman  
 Gilead Sciences  
 The Greater Washington Community Foundation  
 Highmark Health  
 Horning Management Co ★  
 Lynne Horning  
 The J. Willard and Alice S. Marriott Foundation  
 Lynn H. Johnson  
 Kini Fund  
 KPMG ★  
 Lois and Richard England Family Foundation  
 Ann and John P. McAllister ★  
 MedStar Health Care Research Institute  
 Morris & Gwendolyn Cafritz Foundation  
 Naomi and Nehemiah Cohen Foundation  
 New York Community Trust



Maria Weber (center) who received our 2024 Tom Nees Award for Exceptional Service poses with her husband, Lee, and son, Braden.

Optum Services, Inc.  
 RAD-AID International  
 The Rita and Alex Hillman Foundation  
 Roland N. Karlen Foundation  
 remembering Roland N. Karlen  
 Bruce Rosenblum and Lori Laitman Rosenblum  
 The Schattner Foundation  
 Share Fund  
 The Estate of Meyer and Deanne Sharlin  
 The T. Rowe Price Program for Charitable Giving  
 Rachelle Toman, MD and Kirsten Barrett, PhD  
 Unity Healthcare/Title X  
 U.S. Department of Housing and Urban Development  
 William J. & Dorothy K. O'Neill Foundation



Volunteers from USI Insurance were part of assembling over 2,000 backpacks with school supplies.



American Federation of State, County & Municipal Employees  
 Ardmore Institute of Health  
 Association of American Medical Colleges  
 David and Naomi Balto  
 Brian and Cathy Bernasek  
 Stephen Blommer and Charles Holzwarth, Jr.  
 Bloomberg L.P. ★  
 G. Thomas Borger and the late Geraldine Borger  
 Elizabeth Roberts Boyle and Alex Boyle  
 Sarah L. Buffone  
 CareFirst BlueCross BlueShield ★  
 Centene Corporation ★  
 Central Indiana Community Foundation  
 City First Bank ★  
 Community Foundation of Greater Memphis  
 Danielle Drissel  
 Ryan and Christina Duffy ★  
 Denise and Geoffrey Eaton ★  
 Fannie Mae  
 Erica and David Farhat ★  
 Fidelis Care of NJ ★  
 Gallup, Inc.  
 Alexandra Geary  
 Georges Lurcy Charitable & Educational Trust  
 Georgetown Presbyterian Church  
 Kathryn Hanley and Michael Hanley  
 Hope Housing - Irving Street  
 Darnell and David Jayne ♥

Chris and Carole Kerns ★  
 David C. Kerns and Rebecca Scott  
 Christopher and Emily O. Kimm  
 Jenna Kirkpatrick Howard and Adam Howard ★  
 Lee and Alec Koch  
 Lockton Companies ★  
 Judith and Charles Lyons  
 Emily and Raj Madan ★  
 Lisa and David Madden  
 Desiree and John Magney  
 David and Patricia Markey  
 Raymond and Jen Martz ★ ♥  
 McAllister & Quinn ★  
 Melissa McGuire and Charles Andrew Miller ★  
 Jeanne McManus  
 Elizabeth and Joel Merriman  
 Mia Sutphin Foundation  
 Morgan Stanley Gift  
 Nulsen Family Foundation, Inc.  
 Vernon Oakes  
 Timothy and Cynthia O'Neill  
 Gail K. Paster remembering Howard Paster  
 Pebblebrook Hotel Trust  
 Beth Peters and Brad Fagg  
 Suzanne M. Rhoad ♥  
 Shrensky Foundation Inc. honoring Chris and Carole Kerns  
 Lewis and Barbara Shrensky  
 Sibley Memorial Hospital ★  
 Skadden, Arps, Slate, Meagher & Flom LLP ★



Members of our Board of Directors (all named on page 1), pose with Kelly after a full day together.

Richard W. and Katie Snowden  
 Spur Local  
 Patricia Stonesifer and Michael Kinsley  
 Kelly Sweeney McShane and Kevin McShane  
 Brian and Debbie Sweeney  
 Molly O. Sweeney  
 The Dennis M. Barry Charitable Fund  
 The Green Charitable Foundation, Inc.  
 The Kay Family Foundation, Inc.  
 The Northern Trust Charitable Giving Program  
 The Pew Charitable Trusts  
 The Shafer Philanthropic Family Fund  
 United Way of the National Capital Area

Vanguard Charitable  
 Venable Foundation, Inc.  
 Mallory and Diana Walker  
 Maria B. Weber and Lee Weber ★ ♥  
 Walter Weiss, MD and Susan Okie, MD  
 Dov N. Weitman  
 Mark and Kim Wilkerson  
 Julie Willard and Kevin Willard ★  
 Melanie Jarratt and Douglas Wolfe  
 World Bank Group Community Connections Fund  
 Yellow House Consulting Group LLC  
 Missy and Mike Young

# Grateful for You, Home Builders

Ada Harris Maley Memorial Fund  
Island Adams ♥  
Rose E. Alford ♥  
Michelle Althuis  
Amerigroup/WellPoint  
District of Columbia ★  
AmeriHealth Caritas District of Columbia ★  
Maureen Andary honoring her clients  
ARCLE Support Services ♥  
David and Deborah Astrove  
Tabari M. Baker, PhD and  
DaJoie Baker, PhD ♥  
Geoffrey Bakker  
Bank of America Charitable Gift Fund  
Bank of America Matching Gifts  
Lorenzo Bared ♥  
Razvigor Bazala  
Daniel Becker and Naomi Isaacson Becker  
Alsan Bellard, MD, MBA  
Alfredo Benavides and Martha  
Moss-Benavides  
David and Rebecca Bibb  
Ned and Jill Bicks  
Aislinn Black ♥

Jeanne Bowie  
Frank Boyd and Kathleen Montgomery Boyd ★  
Lynn N. and John Brennan  
Annie Burns and John Monahan  
Kenton L. and Susie Campbell  
Carlyle Group Wealth Sharing  
Sara J. Cartmill  
Sean Cavanaugh and Rima Cohen  
Charles Aris, Inc.  
Charles Delmar Foundation  
Jennifer R. Chilton and Christoph Hundack ★  
Christ Church Parish - Georgetown  
Mary Clark  
Tom and Julie Clendenin  
Charity Coffey Gribbin ♥  
Commercial Real Estate Advisors ★  
Community House Church  
Conrad N. Hilton Foundation  
William Cordes ♥  
Erik and Manal Corwin  
Stephany Couper ♥  
Leah Creiglow ♥  
Lani and Ric Daniels honoring Rob Huey

Tom and Elissa Davidson ★  
Jim Del Vecchio, MD and Pamela Del Vecchio  
Anand and Laurie Desai ♥  
District of Columbia Primary Care Association  
Val and Celeste Ellicott  
Richard and Diana England  
Mary and Terry Fairbanks ♥  
Katie and Kieran Fallon  
Linda D. Feldmann and Ramon de Castro  
Fidelity Giving Marketplace  
Daniel Fine and Sarah Snyder  
Linda J. Fisher  
Ms. Karin Flynn, PhD and John Flynn  
Raquel Fox  
Isabel Friedenzohn  
Leonard Friedman, MD and Colleen Ryan  
Daniel Frisch  
Leah M. and Mark S. Garrett ♥  
Leslie Gehring and Chris Bair  
Elizabeth Gerrior  
Faith Gibson Hubbard, PhD and  
Drew Hubbard ★  
Richard Gluck  
Victoria Godfrey ♥  
Lisa Gold ★  
Liran and Karen Gordon  
Jonathan Greenberg ♥  
Lisa Greenman and Paul Leder  
Catherine and Joseph Hall  
Robin Halsband and Jeremy Spector  
Nancy Hammond and Ken Hawes  
Benjamin Harris and Christina Barry ♥  
Health Services for Children With Special Needs ★

Lindsey and David Heinemann ♥  
Pia Helensdotter ♥  
Erin Henderson Moore and  
Kellen Moore ★ ♥  
Ryan and Lexa Herbert  
Lydia J. Herz and Dan Felger  
Chloe and Austen Holderness  
Allison Hughes and Arun Ivatury  
honoring Rao Ivatury and Leela Kriplani  
Paul M. Hunt  
Hunton Andrews Kurth LLP ★  
Jerome A. and Deena L. Kaplan Family Foundation  
Maryann Johnson and Ed Noonan ♥  
William C. Jones and Virginia R. Jones  
Kathryn and Brad Keister  
Emma Kent and Benjamin Buch ♥  
Seuk and Olivia Khang  
Lisa and James Kirch ♥  
Erica Kuhlik  
Stephanie O. and Mark Leahey  
Kim Ledford ♥  
Lenzner Family Foundation  
Nancy Liebermann and Joe Godles  
Naomi and Richard Lindahl  
Leah Liszka and Michael Liszka  
Annabelle and Cecil Lockhart ★  
Catherine Lofgren ♥  
Steven Magel ♥  
Grace and Henry Masur  
Mbieri Daughters Association USA, Inc  
Lucy and Thaddeus McBride  
Margaret McCormick and Keith P. McCormick  
Michael and Krista McGee ★  
William and Carol McGrath  
Patricia McGuire  
Sharon McShane

MedStar Family Choice Plan, Inc. ★  
Dipali Mehta and Mark Nelson  
Mary E. Miscally  
Chris and Leslie Monahan  
Montage Development Group LLC ★  
Kara and Gerald Morrissey  
Scott and Sara Motejunas  
Andrea E. and Nejdah R. Mulla  
remembering Hank and Helen Ellison  
National Cooperative Bank ★  
David Neigus  
Sara and Peter O'Keefe ★  
Howard Opinsky and Colleen Connors  
Orchid Affairs Wedding & Event Planning ★  
Organized NATCA Employee Union  
Palm Facility Services ★  
Charles C. and Susan Parsons  
Philip L. Graham Fund  
Pontius Tax Law, PLLC ★  
Elena R. Reece  
Ellen Riddleberger and Nick Tabbal ★  
Daniel and Caitlin Rogger  
Jill Rosenbaum Meyer and Richard Meyer  
Penelope W. Saltzman  
SB & Company, LLC ★  
George and Nancy M. Shashaty  
Melissa Skolfield and Frank Curtis  
Nichole and Aidan Skoyles ♥  
Suzanne Stetkevych remembering  
Laura Helen Pinckney and  
Jaroslav Stetkevych  
Jane and Herb Stevens  
Hank Stuever  
T. Rowe Price  
Kathlyn and Kurt Taylor Gaubatz  
Angela and Bill TenBusch ♥  
Karolyn Teufel remembering Leslie  
Brettschneider

The Bank-Fund Staff Federal Credit Union  
The Blackbaud Giving Fund by its agent,  
YourCause  
The Carlyle Group  
The Giving Square - Kids for Kids Fund  
The Helaine and Ronald Mario Fund of  
Ayco Charitable Fdtn.  
The Jewish Federation of Greater  
Washington  
The PMRC Foundation, Inc.  
The Rogue League Sports Inc.  
TIAA Charitable  
Julia and Michael Torrey ♥  
Carla and Wayne Turnage  
Khandra Y. Tyler-Beynum  
United Bank ★  
UnitedHealthcare Community Plan of DC ★  
Urban Land Institute Washington  
US Bank Foundation Employee Matching  
Gift Program  
USI Insurance Services ★  
Keven Vance and Philip Gerson  
Visionary Ophthalmology, LLC ★  
Jennifer Wall  
Cortney Watson and Jeff Kruszewski  
Pamela and Gregory A. Weiss  
Liz and Tim Welsh  
Stephen J. Weyer  
WC Smith ★  
Walter and Kari Winnicki  
Pamela and James W. Wise  
Russell Woodgates  
Stephanie and Raymond Wright  
Cindy and Merrill Yavinsky  
Shannon Zeigler  
Xuhao Zhang  
Zimmer Gunsul Frasca Architects LLP  
Stephen Zwirn



Gracie Andres from Urban Land Institute Washington enjoys coloring at Bellevue Family Success Center's Winter Celebration.





Denise and Geoff Eaton gather with Kara and Gerald Morrisey.

Brett and Catherine Abbott ♥  
 Olubunmi Akinadewo ♥  
 American Endowment Foundation  
 America's Charities  
 Michal Avni ♥  
 Nancy Barnum remembering Joe Horning, Jr  
 James and Linda Beers  
 Darric Boyd  
 Carin C. Brown  
 Richard and Judy Carfagno  
 Patricia Carter  
 Lois Cecsarini  
 Molly Charles ♥  
 Chevy Chase Trust Investment Advisors  
 Regina and Andrew Church  
 honoring Rebecca Church  
 Otto Condon  
 Patrick Condray  
 remembering Sydney J. Condray  
 John and Louise Crissman

Jeffrey and Tamara Dierman  
 Whitney Doll  
 Danielle Dooley, MD  
 John Douglass  
 Julia Druhan ♥  
 Ruth Fisher Pollard and Gary Pollard  
 Melanie and Rick Folstad  
 honoring Chris and Carole Kerns  
 Holly C. Frost  
 James Gehring  
 Bhavna and Ankur Ghia  
 Laurel W. Glassman  
 Ryan Good and Hannah Dueck  
 Sara Gray ♥  
 Helene Hemus and Chris Hemus  
 Anne Henderson  
 Charles Hennessy and Nancy P. Cowdin  
 Emily Henry ♥  
 HGA Inc.

Deidre Hilliard ♥  
 Chris Hughes honoring Alice Marie Hughes  
 Lucas Huisenga ♥  
 Independent Project Analysis, Inc.  
 AJ Jensen and Jay Louvis ★  
 Jason Kahn  
 Frank J. Kauffman  
 Sarah Keane and Niall Feerick  
 Michael Kenefick  
 Katrin Khojasteh  
 Kathleen Killion  
 Daphne Kiplinger and Dave Steadman  
 honoring Kelly Sweeney McShane  
 KP & Phoebe Tsolainos Foundation, Inc  
 Robert Lazerow and Cabell Jonas-Lazerow  
 honoring Leah Garrett  
 Stephanie Leonetti ♥  
 Marissa Liebling and Colin Sonnier  
 Robert and Laurie Lindsley  
 Pamela Lumpe

Beverly Lunsford, PhD ♥  
 Michele and Jeremy Lunsford ♥  
 Helaine and Ronald Mario  
 Thomas McCarthy  
 John M. McCullough  
 Sharon McDonald  
 Nicole and Brian McEntee ♥  
 Cleopatra McGovern, MD  
 John McGovern  
 honoring Dr. Cleopatra McGovern  
 Maggie McMullen ♥  
 Sarah McNamer ♥  
 Suzanne C. and Gary Mead ♥  
 Joshua and Nicole Mintz  
 honoring Kelly Sweeney McShane  
 Morgan Stanley Global Impact Funding  
 Trust, Inc

Kellie and Jeff Nasser  
 Nka Ikem Esit Charitable Organization, Inc.  
 Steven Olender ♥  
 Amy Pate  
 Patrice Pitts ♥  
 Raymond James  
 Joseph and Cheryl Roberts  
 Fred Ryan and Genevieve  
 McSweeney Ryan  
 Susan Saulny ★  
 Ruth Schickel ♥  
 Dorothea and Bob Senechalle  
 honoring Chris and Carole Kerns  
 Dawn Sherman, PhD and Roger Sherman  
 Wendy A. Simmons ♥  
 Simpson Gumpertz & Heger  
 Surescripts, LLC

Sandra and Lawrence Taub  
 Cecelia Templeton ♥  
 The American Gift Fund  
 The Ryan Family Foundation  
 Michael and Jana Toner  
 Paul and Janet Valette  
 Gary L. and Siyroush S. Visscher  
 Victoria Wachino  
 David Whyte  
 Navoda Wickramasinghe  
 Becky and Andrew Widman  
 Eileen Wiley  
 Al Wilkins and Ms. Patricia's  
 Helping Hands  
 Ed Williams  
 Emily Wolf  
 Victoria O. and Harvey Zuckerman



Palmer Voorhees, James and Pamela Wise, TaQuoya Livingston, and Nicole Dresner enjoying each other's company at Night of Hope.

★ Event Host or Sponsor ♥ Sustainers of Hope give monthly donations.

**Your Support Matters, Friends**

## Acknowledging Partners & Other Significant Supporters

Arup  
Breadcoin  
Christ Child Society  
Consigli Construction  
CoStar Group Builds  
Cybex  
Crowell and Moring  
DC Benevolent Beautiez and DC Bloc Burnaz

DC Diaper Bank  
DC Public Library Outreach Department  
Deloitte Services  
Dodie Brady and Global Harmony Through  
Personal Excellence  
Edlavitch Jewish Community Center of Washington, DC  
Friends Meeting of Washington  
GCS-SIGAL

George Washington University Hospital  
George Washington University Physical Therapy Program  
Henry's Soul Food Café  
HomeAid National Capital Region  
Horace Mann Elementary School  
HOYA Clinic at Georgetown University  
School of Medicine  
Miller & Chevalier Chartered

Passion City Church DC  
Postpartum Support International  
Gail Ruf  
Sylogist  
Vaccines for Children  
Vedder Price DC  
Washington National Cathedral

Friends from  
Booz Allen  
Hamilton leading  
a birthday party  
at Fam-Club.





# Imagine: Your Role in Our “What’s Next?”



## Ways to Volunteer

Your time is a gift. Volunteers lead family celebrations, host workshops, and create moments of joy in our housing programs.

- Host a Fam-Club or birthday party at The Triumph or The Aya
- Connect with us to explore team or individual volunteer opportunities

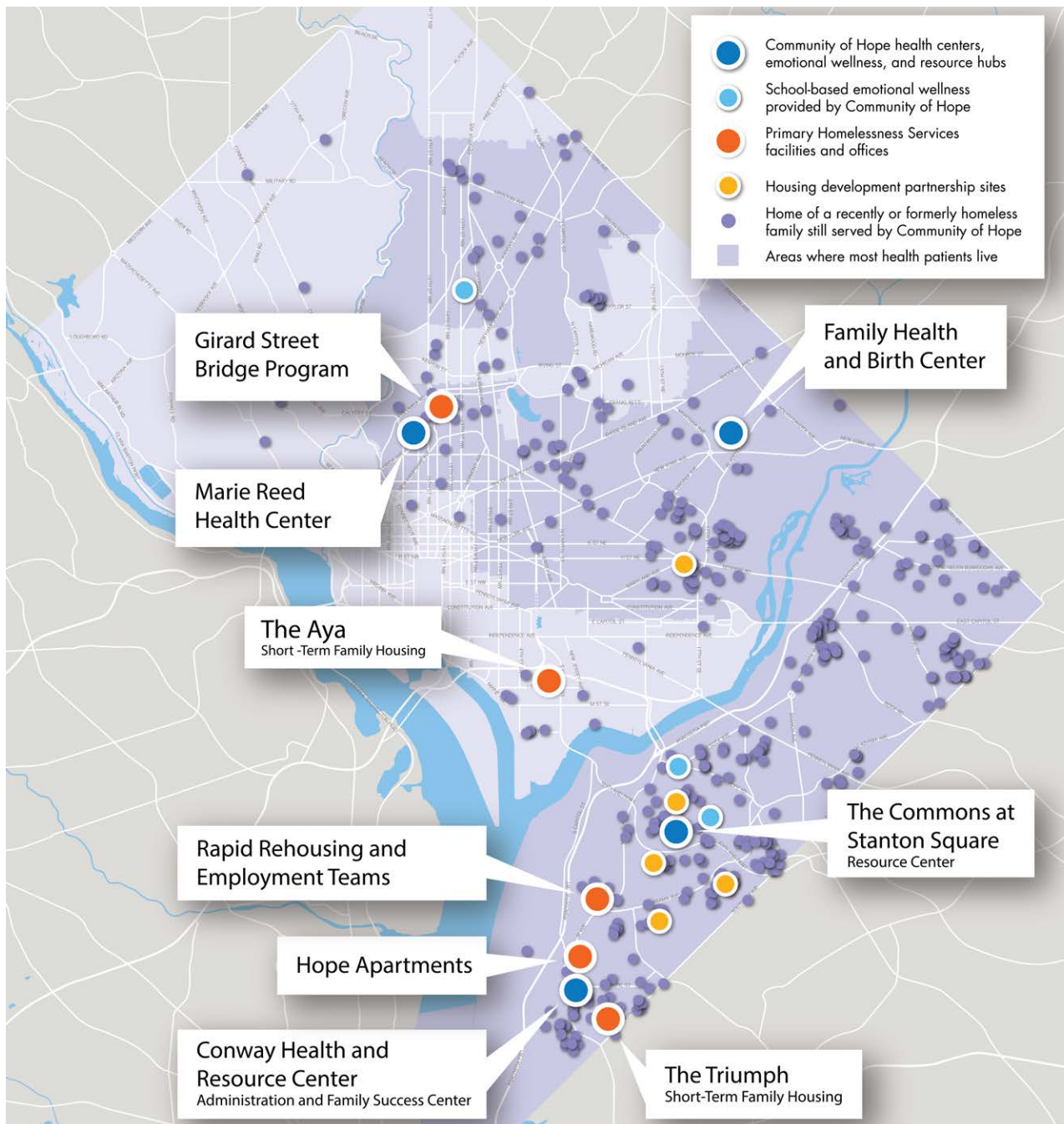
## Ways to Give

You power the work. Every donation—big or small, one-time, or recurring—helps us provide healthcare, housing, and hope to families in DC.

- Make a one-time gift at [communityofhopedc.org/donate](https://communityofhopedc.org/donate)
- Become a Sustainer of Hope with monthly giving
- Leverage your company's workplace giving or corporate match program
- Donate baby supplies, household goods, or children's books from our wish lists

**Ways to Give, Volunteer, and Spread the Word**





## Our Mission

To improve health, end homelessness, and partner with communities to make Washington, DC more equitable.

## Our Vision

Everyone in Washington, DC is healthy, housed, and hopeful.

## Approach and Values

**We celebrate people's strengths** and acknowledge the impact of trauma on people's lives.

**We strive for excellence** and value integrity in all that we do.

**We embrace diversity**, welcome all voices, and treat everyone with respect and compassion.

**We lead and advocate** for system change.

## Administrative Offices

4 Atlantic Street, SW Washington, DC 20032

202.407.7747

development@cohdc.org

[www.communityofhopedc.org](http://www.communityofhopedc.org)

